

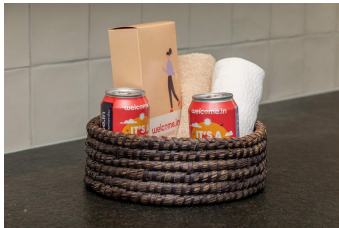
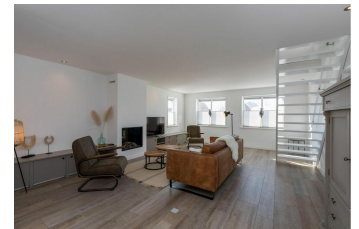
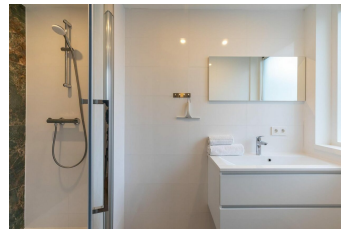
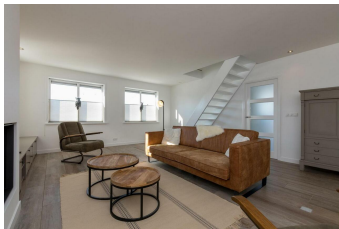
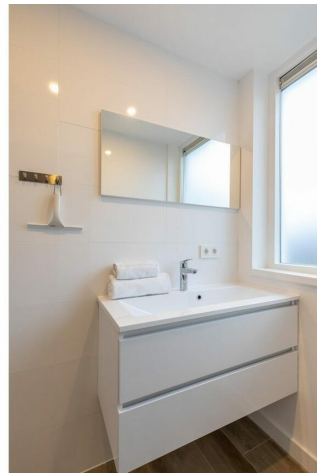
# Oostkapelseweg 32 Serooskerke 'Ooievaar' Serooskerke

'Fun holiday home in a small, child-friendly holiday park'



Ferienunterkünfte  
Vakantiewoningen  
Holiday Homes

www.peoos.eu



The living room has a cosy fireplace, a spacious, comfortable couch, and two armchairs from which to watch TV. The spacious dining area can accommodate eight people for wonderful dinners with friends and family. The adjacent open, country-style island kitchen has a gas cooktop, oven, dishwasher, refrigerator, freezer, toaster, coffee maker, Quooker, and Nespresso machine. The first floor has two bedrooms with bedside tables and a closet; one has a double bed (180 x 200 cm), and the other has two single beds (80 x 200 cm). On the ground floor of our accommodation, you will find two bathrooms. The first bathroom is equipped with a double sink so you can freshen up at the same time as your travel companion. There is a toilet, a spacious walk-in shower, and a convenient hairdryer. The presence of a second bathroom offers extra comfort in this lovely holiday home, ideal for when the other is occupied, so you no longer have to wait for each other. This one is equipped with a comfortable shower and a sink with a handy storage unit where you can put all your belongings. The first floor also has a separate second toilet. The stairs in the living room lead to the second floor, where there are two more bedrooms, each with two single beds (80 x 200 cm). A high chair, folding cot, stair gate on the second floor and some toys are available for small children. Pets are not allowed in this accommodation. The door in the kitchen leads outside onto the grand terrace of around 200 m<sup>2</sup> that borders the open playing field. Enjoy a cup of coffee in the sun from the garden furniture on the wonderful terrace, watching your children having a great time in the playground. Your holiday starts the moment you arrive! If you bring bikes, you can park them in the bike shed outside the accommodation, next to the storage room.

Surrounding area

[Aktuelle Preise finden sie auf unserer Homepage.](#)

This holiday home is located near the small village of Serooskerke. The village has a large supermarket and several great restaurants. The villages of Oostkapelle and Vrouwenpolder are nearby. The island of Walcheren has a lot to offer. Enjoy the beautiful De Manteling and dune area Oranjezon nature reserves between Domburg and Vrouwenpolder, or visit the impressive Westhove castle. The island of Walcheren is also known for its numerous clean beaches and comfortable beach pavilions along the coastline of this extraordinary part of Zeeland. This accommodation is an ideal base to discover Walcheren, the villages and towns like Middelburg and Vlissingen, and the surrounding islands of the water-rich province of Zeeland.

Aktuelle Preise finden sie auf unserer Homepage.