

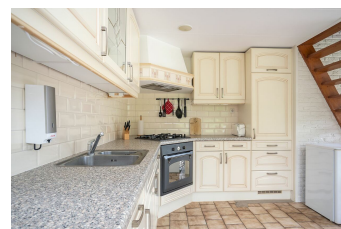
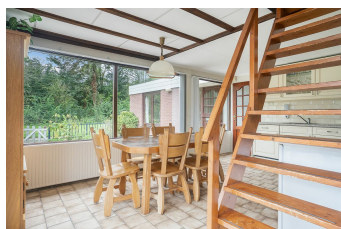
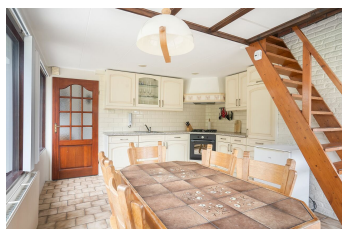
Birds nest Noordwijkerhout

Suitable family house with enclosed garden in a nice park



Ferienunterkünfte
Vakantiewoningen
Holiday Homes

www.peoos.eu



Cosy holiday home for the whole family

This charming holiday home in Park Solassi in Noordwijkerhout is the ideal destination for families seeking a comfortable and child-friendly vacation. The holiday home is child-friendly with a cot and high chair, ensuring even the littlest ones feel at home. Your dog (maximum 2) is also welcome, making this the perfect destination for the entire family.

Comfortable living space and fully equipped kitchen

The 92 m² holiday home features a spacious fenced garden, complete with BBQ and garden set with six chairs – perfect for enjoyable outdoor meals. The bright living room is equipped with a comfortable leather seating area where everyone can relax. For colder days, there is a cosy fireplace providing additional warmth and atmosphere. The kitchen is fully equipped with a separate freezer, microwave, and oven. Additionally, there is a spacious dining table with six chairs and a high chair, allowing you to enjoy delicious meals together.

Ground floor bedroom

On the ground floor, you will find a cosy bedroom with a single box spring bed, washbasin, and wardrobe. There is also a modern bathroom with washbasin, shower, and toilet, where you will find the washing machine for your convenience.

[Aktuelle Preise finden sie auf unserer Homepage.](#)

Upstairs with five sleeping places and baby bed

Upstairs, there are two more comfortable bedrooms. The first bedroom has a double bed, a small dressing table, and a wardrobe. The second bedroom is equipped with a single box spring bed and a chest of drawers. On the spacious landing, you will find two additional single beds; the first bed is a box spring bed and the second single bed has handy drawers underneath. A fan is available for warm days. Here you will also find a folding baby cot with mattress and bed sheet.

Holiday Park Sollasi

This location is the most famous flower region in Holland, the 'Bollenstreek'. Here you can make beautiful cycling tours through flowering tulip fields and visit pretty little villages. The forests, the dunes and the North Sea beach are only a few minutes away by bike.

Bicycles, children's bicycles and child seats can be rented at the reception.

You can store your own bicycles in the shed at your holiday home. At the campsite you can get fresh bread rolls in the morning.

There are two different restaurants at the holiday park where you can enjoy your breakfast, a cup of coffee or tea, delicious lunches or dinner. The MAMA is an Italian restaurant and is located directly in the bungalow park.

The Como & Co restaurant is located directly on the lake. Here you can rent kayaks and rowing boats.

The holiday park has a lot to offer for both young and old. You can play petanque or tennis. Children can play on the many playgrounds. At the lake you will find cosy beaches and sunbathing lawns for extensive sunbathing.

There is a horse farm about 300 metres away. You can stable your own horse there during your stay. The horse farm borders the dune area 'Hollands Duin'. From here you can take beautiful rides through the dunes of Noordwijk and Noordwijkerhout.

In short, an abundance of possibilities for the whole family!

Explore Noordwijk and surroundings

Noordwijk is renowned for its beautiful beaches and numerous activities for the whole family. The beach is just a short bike ride or walk away, perfect for a day of sun, sea, and sand. There are plenty of activities for children to enjoy, such as visiting the Space Expo, an exciting climbing park, or Linnaeushof adventure park, the largest playground in Europe.

[Aktuelle Preise finden sie auf unserer Homepage.](#)